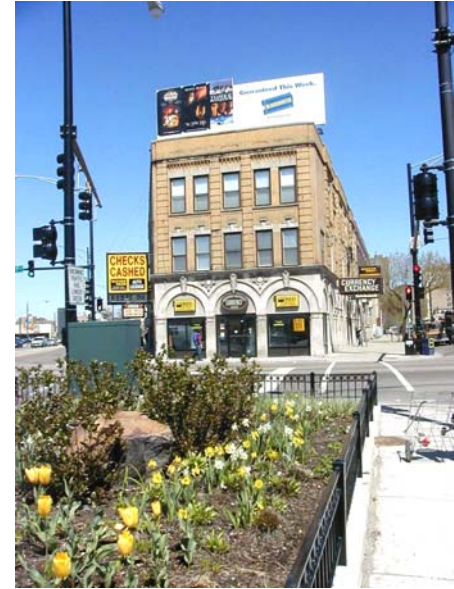


Corridors of Vision
Assessment Workbook 2

BROADWAY:

**Leland to
Irving Park**

*See map in
center fold.*



Instructions:

- *Visit the area, preferably more than once to observe activities during several different times of day.*
- *Record your observations, if possible, by taking notes, photographs, and/or sketching.*
- *Review the questions/values and use them as a framework for your assessment.*
- *While considering each numbered question, envision how each issue might change with revitalization.*
- *Additional ideas for consideration are listed below each question. Please add your own thoughts.*

1. How is the area **accessible and amenable** to the needs of residents and visitors?

How did you get here? What is it like moving around in the area? How do you see others circulating? If you drove, where did you park? What time of day is it? What predominant activities are taking place? Identify the users of this area (pedestrian, auto, office workers, residents, seniors, youth, ethnicity, daytime and evening users, etc.)

2. What is the perceived level of **safety** here? How could this area feel more secure?

What creates a sense of comfort or discomfort? What level of activity is happening around you? Are you at a busy intersection or on a side street? What time of day is it? If at night, what is the level of lighting?

3. What are the available **goods and services** in this area? What could be available that is not currently?
-

What types and sizes of stores are here? Are they national chains or locally owned? What type and quality of merchandise is available? What price point? How many vacancies can you see? What are other predominant uses?

4. What is the **aesthetic** feel of this area, including architecture, streetscape, and green space?
-

What is the scale of the buildings and streetscape around you? What sense of style do you notice? Do your surroundings feel modern or remind you of another time period? What is the physical condition of the public infrastructure? What street furnishings are present? How close is the nearest trash can? Where are people sitting and standing?

ADDITIONAL NOTES:

What would you like to see change? What would you like to stay the same? Any other comments?

5. In what ways does the area give a **sense of community**, inclusive of Uptown's diversity and multi-cultural traditions?
-

How does this area express the diversity of our community's current populations? How are you made aware of Uptown's history? While traveling to the area, at what point do you know that you are in Uptown? At what point do you know that you are in the current study area? What specific elements set this area apart from its context?

**Corridors of Vision
Assessment Workbook 2**

BROADWAY – Leland to Irving Park



*Use this workbook to take notes as you visit the study area.
Additional pages are included for your thoughts, sketches, etc.*